

Rural News

Issue 29
February 2012

Produced by St Edmundsbury Borough Council and sent
to people with an interest in rural life



Have your say on the Rural Vision

On 1 March consultation starts on the draft 'Rural Vision 2031' document. This document establishes the council's corporate priorities and vision for the delivery of services up to 2031. It also sets out the council's policies which will apply to development outside the towns.

There are policies, for example, covering which land will be available for employment use (to create jobs), green infrastructure (such as open spaces and woodlands), housing settlement boundaries, as well as identifying sites within the larger villages which are suitable for development up to 2031.

There will be a number of public events in the rural areas where you can find out more about the proposals. These will be advertised in the local press and via the website. We will also be inviting comments on the draft Vision document.

For more information please visit:
www.ruralvision.org.uk
where you can complete an online comments form. If you do not have access to the internet please phone: 01284 757368.

Would you like to work for yourself?



Menta, the Suffolk Enterprise Agency, is working with St Edmundsbury Borough Council to run **free** one to one business advice sessions for people who are thinking about becoming their own boss.

Menta's 'hands on' business advisers will provide these **free**, impartial and confidential sessions in five villages: Barrow, Great Barton, Hundon, Stanton, and Wickhambrook.



Leanne Castle, one of the lead business advisers, says:

"At Menta we are looking forward to meeting more people who are considering self employment. They may live in one of the five villages or in the surrounding villages. We work with a wide range of people as there are many reasons why being your own boss can be the best way forward."

For more information or if you wish to book a meeting, please phone on: 01284 760206 or visit:
www.menta.org.uk

This project has been commissioned by the borough council as part of its Rural Action Plan. If you would like to know about other projects that you could benefit from, please visit www.stedmundsbury.gov.uk/ruralactionplan

New Corporate Plan and priorities

St Edmundsbury Borough Council produces a corporate plan, which is a key document setting out the council's short to medium term priorities, commitments and actions.

It is regularly updated to make sure it is fit for purpose, and the council is now asking the public for comments on the new version which will cover the period 2012 to 2016 (deadline is 15 February 2012). These views will be considered before it is formally approved by councillors.

For more information please visit:
www.stedmundsbury.gov.uk/sebc/say/ConsultationHome.cfm

See inside for:

- ▶ **Grants.....p.3**
- ▶ **Community buying schemes.....p.4**
- ▶ **Support to tackle fuel poverty.....p.4**
- ▶ **Better broadband.....p.5**
- ▶ **Training and capacity building.....p.5-6**
- ▶ **What goes in your blue bin.....p.7**
- ▶ **WSLSP update.....p.8**
- ▶ **and lots more!**



Parish Conference - put the date in your diary

Monday 23 April 2012
6pm to 8:30pm
Great Barton Village Hall

More information to follow in the
April edition or phone: 01284 757303.

Get involved in the 2012 Business Festival



September 2011 saw the first Business Festival held in Bury St Edmunds, the only festival of its type in

the eastern region.

The festival consisted of ten days of events and workshops aimed at helping businesses to start, grow, survive and thrive.

The festival proved so successful that plans are already in place to make it bigger and better in 2012, culminating in the very first West Suffolk Business Awards ceremony.

Various opportunities exist for any business that wants to get involved, from attending events to becoming one of the sponsors. There will be opportunities to be the headline sponsor or to be associated with the business awards and individual events.

For more information please contact James Talbot by phone on: 01284 757219 or by email at: james.talbot@stedsbc.gov.uk

Westley becomes first village to benefit from a projector and screen grant

As part of the Rural Action Plan, the borough council is offering villages the chance to apply for a grant of £250 towards the purchase of a projector, screen and other related equipment to be installed in the local village hall/community centre for community use.

These items would provide many benefits for a village, including:

- allowing you to run community entertainment, for example film and quiz nights;
- making your village hall/community centre a more attractive venue for conferences or seminars; and
- enabling groups of people to view planning applications online.

Whilst Westley is the first village to receive its grant, several other villages are due to claim their grant money shortly.

However, there are still a few more grants available so if you think your village could benefit please contact us using the details below.



For more information please phone us on: 01284 757109 or email us at: rural@stedsbc.gov.uk



Money, money, money

The Suffolk Foundation is seeking grant applications from voluntary and community groups, including social enterprises. One of the funds managed by The Suffolk Foundation may be able to support the costs of your project:



- Creating the Greenest County Fund for carbon-reducing initiatives, with grants of up to 50% of your project costs or £25,000 (whichever is the greater);
- The Transforming Suffolk Community Fund, with grants available of up to £5000;
- The Improve Fund gives grants of up to £5000 for project or core costs if you can demonstrate that a grant would move your organisation towards self sustainability; and
- The Suffolk Fund can cover core costs with a grant of up to £2000.



The Suffolk Foundation recently held its AGM at the apex in Bury St Edmunds and was delighted to be able to showcase some of the supported projects. The evening was attended by over 200 people, including the local group Workwise, who showcased their boat project (see photo). Awards were given totalling over £50,000 to groups who had been able to demonstrate that they had achieved some remarkable outcomes without the aid of grant funding. The Foundation is seeking further applications to the 2012 Improve Fund Awards.

For more information, including deadlines and application forms,

please visit: www.suffolkfoundation.org.uk You can discuss your ideas informally with Sue Wright by phone on: 01473 734127 or by email at: sue.wright@suffolkfoundation.org.uk - Sue can also help you decide which fund to apply to, plus give you guidance on form filling, criteria, and so on.

Grants available to fund Olympic celebrations in Suffolk



Suffolk County Council has launched a small grants programme called Suffolk Celebrates, which is offering grants up to £500 to enable people to

organise events to celebrate London 2012.

The programme is specifically aimed at supporting town and parish councils, community groups and groups of individuals across Suffolk to organise events linked to the Olympic Torch Relay, Big Dance or the Opening Ceremony of the Olympic Games.

For more information, and to download an application form, please visit:

www.risingtothechallenge.org/culture or email: denise.king@suffolk.gov.uk

Free loft and cavity wall insulation up for grabs *

Loft and cavity wall insulation is available free to all homeowners and privately renting tenants, regardless of income.

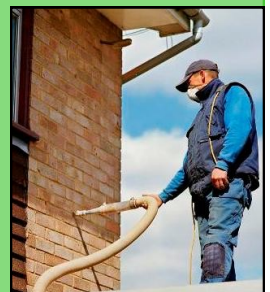
St Edmundsbury Borough Council is working in conjunction with Aran Services Ltd and national utility suppliers to provide free insulation.

Do not miss out on this offer; applications are limited until May 31 2012. Insulating your home could make a real difference to your energy bill over the coming year.

* Free subject to survey, availability of funding, access and where more than 60mm of loft insulation is existing a minimum charge of £189 will be applicable. Other schemes may operate in your area.

For more information and to arrange your free, no obligation, survey, please contact Aran Services Ltd by phone on: 0800 5877795 or visit:

www.aranservices.co.uk





Save money through community buying schemes

Community buying has always been a good idea, but it is even more so at a time when energy bills are getting higher and higher. There is a project aimed at promoting buying consortia in villages in the borough council's Rural Action Plan, and as such we are delighted to see that BIS has produced a practical guide on how to set up and run a community buying group.



To download the guide, which gives advice on how to set up and run community buying schemes, please visit: <http://discuss.bis.gov.uk/buying/>



Locally, Suffolk ACRE has set up a social enterprise that will reduce the cost of your domestic heating oil each time you place an order. The scheme is part of a national initiative started by colleagues in Oxfordshire and is now operational in about 20 counties. All you need to do is pay an annual membership fee (which covers all orders you make during the year) and place a minimum order of 500 litres.

What's the snag? There isn't one. By bringing communities throughout Suffolk together and making the most of joint buying power, we can make savings and pass them directly to people like you whose fuel costs are high simply because you use oil-fired central heating. It is not Suffolk ACRE's intention to take over any of the excellent schemes that exist around the county. If existing schemes want to encourage their members to join the Suffolk ACRE Community Buying scheme they are free to do so, as many smaller schemes may appreciate not having the hassle involved with negotiating, and buying in greater volumes should get better discounts, but it is not Suffolk ACRE's intention to interfere with any existing schemes.

For more information please contact Suffolk ACRE Community Buying Ltd by phone on: 01473 345300, by email at: oil@communitybuying.org.uk or visit: www.communitybuying.org.uk

Support to tackle fuel poverty in Suffolk

St Edmundsbury Borough Council is working with partners across Suffolk to tackle winter fuel poverty with a £260,000 grant from the Government's Warm Homes, Healthy People fund. The cash will be used to fund a number of initiatives, which are subject to eligibility.



A special telephone line, 08456 037 686, has been set up to help to deal with enquiries and can offer, subject to availability:

- free information, advice and support to anyone struggling to keep warm this winter;
- installation of free community alarms fitted with extreme temperature sensors in vulnerable people's homes, along with a befriending service;
- free temporary heater loan scheme;
- free emergency boiler repairs for vulnerable households through the Age UK 'Surviving Winter' appeal and funding through the Warm Homes project. Groups to benefit will include the over 60's, families on a low income, families with children and young people with learning disabilities;
- free insulation and small energy efficiency improvement jobs, including draught proofing;
- free independent energy surveys in the home to help households struggling to pay their energy bills by offering advice and providing help to install measures to save money and energy; and
- A road show run by Suffolk ACRE to promote their good neighbour and community oil buying schemes.

For more information please phone the hotline on: 08456 037 686 or visit: www.suffolk.gov.uk/warmhomes



Do you want better broadband?

'Better Broadband for Suffolk' is the official campaign to bring superfast broadband to the whole of Suffolk. Suffolk currently has one of the poorest broadband networks in England with average speeds a quarter of the minimum level we aspire to. To demonstrate Suffolk's need and desire to improve access

to broadband, a new survey has been launched. As part of the questionnaire, you will be asked what your current internet speeds are and what speeds you would be interested in getting. Completing the survey does not involve making a firm commitment, but it will help to show the level of demand and likely take up of superfast broadband services in Suffolk and make the county an attractive place for potential providers to invest in.

The survey only takes five minutes to complete and is an essential part of the campaign's work to prove to ministers and suppliers how much superfast broadband is both wanted and needed. Please take this opportunity to have your say and if possible, encourage your friends and families to take part.

Please complete the survey by visiting: www.suffolk.gov.uk/broadband

Apprenticeships in Suffolk

To support National Apprenticeship Week there are events taking place in Suffolk from 3 to 10 February 2012.

The 'Go with the flow youth bus' will be visiting several schools in Suffolk to raise awareness of apprenticeship options for students.

For more information please contact Pete Mumford by phone on: 01473 260919 or by email at: apprenticeships@suffolk.gov.uk

West Suffolk College is running a 'Have a go' session on Saturday 4 February from 10am to 4pm at the apex.

For more information please visit: www.westsuffolkcollege.ac.uk/news-and-events/events/49/Haveago-sessions-at-The-apex-Bury-St-Edmunds-

Training available for the voluntary and community sector



The Community Learning and Skills Development team at Suffolk County Council (SCC) has put together a comprehensive package to help voluntary and community groups strengthen and build their organisations, combining statutory requirements with courses offering capacity building skills. SCC is also able to offer bespoke courses designed specifically for your organisation's development needs. The courses will be run dependent on demand, at a venue to suit your organisation, with a minimum group of eight people. Some of the courses may be free of charge if the group of learners are below a full level 2 qualification (5 grades A to C GCSE's).

For more information please contact Joanne Amoils by phone on: 07545 419578 or by email at: joanne.amoils@suffolk.gov.uk

Young Suffolk is running an 'introduction to safeguarding children and young people' course on Tuesday 28 February 2012, from 6:30pm to 9pm at the Bury St Edmunds Volunteer Centre.

For more information please contact Ellie Pidsley-Cook by phone on: 07786 075513 or by email at: elliepidsley@suffolkonline.net

The Bury St Edmunds Volunteer Centre has organised courses including stress management, communication skills, time management and first aid. With funding from the West Suffolk Local Strategic Partnership, the courses are free of charge but would be £75 per person if charged.

For more information please contact Hazel Pidsley by phone on: 01284 766126 or by email at: chiefofficer@volunteercentre.co.uk

Have you checked out the Community Information Project toolkit yet?



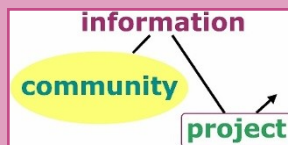
The Suffolk ACRE Community Information Project (CIP) is an innovative toolkit for mapping and auditing resources and building the capacity for self-help in people and communities.

The CIP technique can rapidly visualise the best path to resources, understand relationships, highlight gaps or duplication and uncover opportunity for innovation and improvement.

A CIP creates expertise in local resources and enables people to inspire, support and guide others. A CIP map increases the capability of people and organisations to meet needs or achieve practically any goal.

One participant said: *"I worked in social services for 25 years, waiting for something like the CIP to come along to help me answer; where can we go? You've done it!"*

The capability of a CIP to explain complex information in low-cost media and compatible with any language is ideal for bridging the digital divide and the hard-to-reach needs.



For more information please contact Nat Bocking by phone on: 01473 345300 or by email at: nat.bocking@suffolkacre.org.uk

Heavily subsidised social enterprise courses now available

Suffolk ACRE is running social enterprise courses in the coming months for start-ups, existing charities, voluntary organisations and social enterprises based in Suffolk.

The programme includes:

- **Understanding and starting a social enterprise - 22 February 2012:** designed to focus on participants' social enterprise ideas and provide practical advice on how to get it set up.
- **Social enterprise legal structures - 7 March 2012:** aimed at individuals or organisations who want to find out more about social enterprise legal structures. This course is particularly useful for people wanting to set up their own social enterprise, but is also appropriate for existing organisations looking at becoming a social enterprise.
- **Business planning - 28 March 2012:** this course is suitable for individuals and/or organisations that need to write a realistic, functional and useable business plan.

All the courses will take place at Brightspace, Ipswich, IP2 0HH and will run from 10am to 4pm (full day courses) and 10am to 1pm (half day courses).

For more information including costs, please contact Elizabeth Storer by phone on: 01473 345311, by email at: elizabeth.storer@suffolkacre.org.uk, or visit: www.suffolkacre.org.uk

Places still left on the NEBOSH health and safety course

Are you fully aware of all the health, safety and welfare legislation and guidance which apply to the workplace?

If not, why not sign up for the NEBOSH National General Certificate in Occupational Safety and Health course, run by West Suffolk College. It is an informative and essential course that your business really cannot afford to miss. The course is competitively priced at £1295 (includes all exam registration fees and course materials) and starts on 21 February for 14 weeks (Tuesdays from 9am to 5pm). The written exam takes place on Friday 15 June 2012.

For more information please contact Services to Business by phone on: 01284 716246, by email at: s2b@wsc.ac.uk or visit: www.westsuffolkcollege.ac.uk/courses/course-information.aspx?ID=16001706562692

'Theatrebus' is coming to town

In conjunction with the Theatre Royal's newest original production - Michael Punter's *Stagefright* - the theatre is re-launching its Theatrebus. Nine different bus routes will get patrons to the theatre for around 7pm, for a 7.30pm start. Buses will leave 15 minutes after the curtain, at around 10pm. Tickets cost £23, or £11.50 for under 26s (price includes the ticket, return bus, a programme and a drink upon arrival).

For more information and to book please contact the Theatre Royal Box Office by phone on: 01284 769505 or visit: www.theatreroyal.org

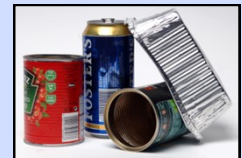


Spotlight on the blue bin

Recyclables from your blue bins are taken to a Materials Recycling Facility in Great Blakenham for sorting. The materials are separated using a combination of magnets, screens, lasers and hand picking, before being sent to re-processors for recycling.



Don't forget that you can put the following items in the blue bin:



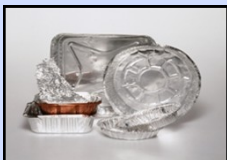
Newspapers, magazines and envelopes

Cardboard



Aluminium containers

Steel containers



Plastic bottles

Plastic containers



For more information please visit: www.stedmundsbury.gov.uk/waste

Important message - incidents involving objects being thrown from bridges

Police and partners, including the county and borough councils, Fire and Rescue Service, Ambulance and Highways Agency, are working together to deal with incidents of objects being thrown from bridges over key routes in Suffolk. There were incidents throughout December, at locations on the A14 near Trimley St Mary, the Orwell Bridge, and near to Newmarket. Fortunately, nobody was injured in these incidents. The police are taking these crimes extremely seriously - throwing objects onto a busy road has the potential to cause serious injury - and even death. There are 32 bridges on the A12 and A14 and the bridges over the A14 in St Edmundsbury are: Rougham Hall Farm, Moreton Hall Cycle Bridge, Risby flyover and Symonds Farm Barrow.



Suffolk Police is asking us all to be vigilant and report anyone acting suspiciously in these areas. Relevant parish councils are being contacted to assist with this process and to monitor the condition of the bridge and surrounding area and arrange removal of any debris which could be used for this purpose.

*** Anyone who has information in relation to these incidents is asked to call Suffolk Police on 101 or Crime stoppers on 0800 555 111. Anyone who sees people acting suspiciously on or near a road bridge should call the police immediately on 999 ***

Changes to the WSLSP

The West Suffolk Local Strategic Partnership will be dissolved in February and a new partnership established in its place called the West Suffolk Partnership (WSP). The WSP is being designed to ensure West Suffolk is well-positioned to respond to national policy changes and the localism agenda. The aim is to assist organisations with a shared interest in West Suffolk to pool their resources, improve efficiency and deliver even greater benefits for local people.

The WSP will cover the district council areas of Forest Heath and St Edmundsbury and will be made up of three key elements:

- **West Suffolk Strategic Group (WSSG)**

The WSSG will be responsible for overall management and leadership of the partnership, providing a forum where decision-makers can identify priorities and work together to provide a strong voice for West Suffolk.

- **West Suffolk Operational Group (WSOG)**

The WSOG is an officer support group for the West Suffolk Partnership and will actively encourage partners to work together and seek local solutions to local issues.

- **West Suffolk Network (WSN)**

The Network will replace the existing WSLSP Forum as a medium for helping communities, individuals and partner organisations to communicate and share best practice. Details of how the network will operate will follow in due course, but the proposal is to create a fully interactive website which, over time, will develop into a 'virtual' community resource for information sharing and joint working, making full use of social media.

For more information please contact Laurna Compton by phone on: 01284 757617 email at: laurna.compton@stedsbc.gov.uk



Farming and rural networks set up

Defra has set up networks across England to identify and feed back local issues and concerns to Government to inform policy making. The rural and farming networks will bring together people from rural communities, rural businesses and the food and farming industries.

The network covering the east is the 'Farming Food and Rural Network East'. This network will have two sub groups: the Rural Forum and a Food and Agriculture Board. This will ensure that both rural and food/farming issues can be debated in depth.

The Network will meet three times per year, normally in the NFU offices in Newmarket, to debate topical issues with each meeting having a theme. This will lead to the writing of short papers which will be used to make representations both to DEFRA and other central government departments on the key issues, as well promoting the same issues locally with local authorities and Local Enterprise Partnerships.

For more information, please contact Martin Collison by phone on: 01553 828405 or by email at: martin@collisonassociates.co.uk

Let BizBuz help you create your future

BizBuz is a new initiative run by [Enterprising Acorns Haverhill](#) and [Menta](#) which aims to inspire enterprise and provide a forum for people to meet, gain business knowledge and access a range of associated benefits. There are no age limits or required qualifications, and membership and events are free.

All sessions are held on Tuesdays at the Menta Training Centre, 2 Hollands Road, Haverhill, CB9 8PP. They are from 9:30am to 11am (for over 24s) and from 11:15 to 12:45 (for under 24s):

21 February	20 March
17 April	15 May
19 June	17 July
18 September	16 October
20 November	

For more information please contact Menta by phone on: 01284 760206 or email at: info@menta.org.uk

Please forward this *Rural News* to others who may be interested.

If you edit a local village magazine, please feel free to use any articles.

If you would like to suggest any future articles please get in touch.

**If you would like a black and white version for printing, please email:
rural@stedsbc.gov.uk**

While there are many benefits to living in a village, smaller communities often need particular help to ensure they thrive and prosper and their unique qualities are protected.

Our clear vision is for active, sustainable and healthy communities and St Edmundsbury plays an important role in helping to achieve these goals.



St Edmundsbury
BOROUGH COUNCIL

St Edmundsbury supports rural communities through:

The Rural Action Plan

Contact Kirsty Pitwood:
rural@stedsbc.gov.uk
T: 01284 757109
www.stedmundsbury.gov.uk/ruralactionplan

Grants

Contact Kirsty Pitwood:
ruralgrants@stedsbc.gov.uk
T: 01284 757109
www.stedmundsbury.gov.uk/grants

Parish Conferences (twice yearly)

Contact Dawn Hale:
dawn.hale@stedsbc.gov.uk
T: 01284 757303
www.stedmundsbury.gov.uk/sebc/live/parishconf.cfm

Rural youth outreach work

Contact Simon Pickering:
simon.pickering@stedsbc.gov.uk
T: 01284 757077
www.stedmundsbury.gov.uk/sebc/play/scene.cfm

Housing

Contact Niki Hollingworth:
niki.hollingworth@stedsbc.gov.uk
T: 01284 757604
www.stedmundsbury.gov.uk/sebc/live/housing.cfm

Tourism

Contact Sharon Fairweather:
sharon.fairweather@stedsbc.gov.uk
T: 01284 757093
www.stedmundsbury.gov.uk/sebc/visit/index.cfm

Planning

Contact Planning Helpdesk:
planning.helpdesk@stedsbc.gov.uk
T: 01284 757675
www.stedmundsbury.gov.uk/sebc/live/planning-services.cfm