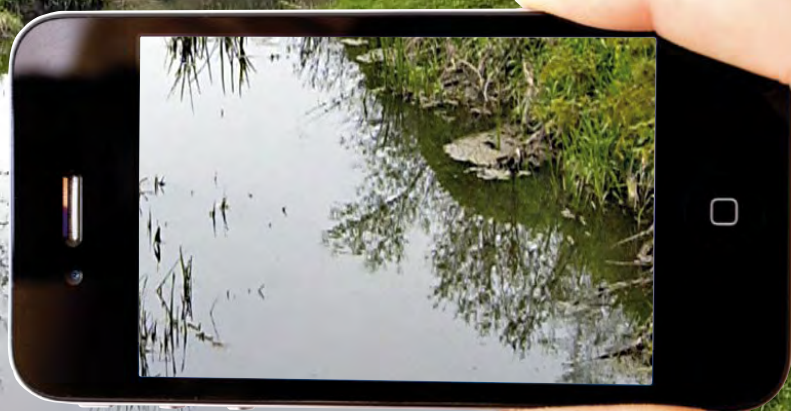


# RURAL VISION 2031



Produced by St Edmundsbury Borough Council

# Introduction



**Vision 2031 brings together a broad overall approach to providing services in St Edmundsbury with the way land is used within the borough to make sure we have enough jobs and homes.**

Very many people have come together over the past few months to say what they expect to see in 20 years' time, and how St Edmundsbury could help to achieve those expectations.

Some years ago, also by working together with many local people, St Edmundsbury developed Vision 2025, which looked at the borough's future. Vision 2031 is an update of that document and it will become part of our Local Development Framework – a document required by law which sets out our future planning policy.

## Three into one

This Rural Vision 2031 summary tries to capture the varied views expressed so far in ten themes which cover the broad spectrum of life within the rural areas. The same ten themes feature in separate Vision documents for Bury St Edmunds and Haverhill, looking at people's hopes for the future, and suggesting ways in which those hopes can become realities by 2031. It also looks at policies covering the way land will be used.



## Themes

Based on what people have told us, these are the Rural Vision 2031 aspirations.

### 1) HOMES AND COMMUNITIES

- a. Every resident has a home that is affordable and suitable to their needs.
- b. Every village has a real sense of community.
- c. The best use is made of existing homes.
- d. All new homes are built to the 'lifetime homes' standard.

### 2) JOBS AND ECONOMY

- a. Villages have local jobs and are not simply dormitories.
- b. New technology and digital services enable businesses to thrive in rural locations.

### 3) TRAVEL

- a. People have access to jobs, education, shops and other services by sustainable and affordable transport.
- b. Villages are connected by safe and attractive networks of footpaths and cycle routes.
- c. Safety of all road users is improved.
- d. Congestion is managed and, where possible, reduced.

### 4) SUSTAINABILITY AND CLIMATE CHANGE

- a. Carbon emissions reducing at a rate greater than Government targets.
- b. Both new developments and existing buildings have high environmental standards and standards of resource efficiency.

### 5) CRIME AND SAFETY

- a. Residents both feel safe and are safe.
- b. Levels of crime and disorder are low.
- c. Villages identify the crime and safety issues which matter to them and lead the response.

### 6) INFRASTRUCTURE AND SERVICES

- a. Infrastructure (such as buildings and roads) and services (such as water supply) meets villages' growing needs.
- b. Visual impact of infrastructure is kept to a minimum.
- c. Fast broadband is available to residents and businesses.
- d. Water supplies are of good quality, readily available and used wisely.
- e. Development is protected from flooding.

### 7) CULTURE AND LEISURE

- a. Residents and visitors have access to a range of high quality sports, leisure and cultural activities.
- b. Cultural and leisure activities bring social and economic benefits for all sectors of the population, promoting health, offering



alternatives to anti-social behaviour and helping to protect the environment.

- c. Local groups work together to offer cultural and leisure activities.
- d. Cultural and leisure activities are provided at the lowest possible cost and offer the best possible value.

## 8) HEALTH AND WELLBEING

- a. Service centres are vibrant hubs of activity with health services and activities.
- b. The good quality rural environment helps to enhance people's lives and support a sustainable rural economy.
- c. We provide adequately for the needs of an ageing population.

## 9) EDUCATION AND SKILLS

- a. Successful local schools with educational attainment above national averages.
- b. Existing schools are supported through a period of change and efficient use is made of vacant school sites.
- c. School facilities are of a high standard and fulfil a wider community role.

- d. Schools raise aspirations and create the workforce of the future.
- e. Residents have easy access to schools, further education opportunities and vocational and technical training.

## 10) HISTORIC AND NATURAL ENVIRONMENT

- a. The historic and natural environment is protected, maintained and enhanced.
- b. The new pressures on the countryside are managed and new development is in keeping with and respects the unspoilt rural environment.
- c. Access to the countryside is improved and enhanced.

### Actions

Vision 2031 isn't just about the future, it's about how we get there. Alongside each of the aspirations is a list of actions. There are hundreds of actions in total, many of which will need a wide range of organisations working together to achieve them. Please look at the proposed actions on the website to see whether you agree with them.

# The Vision for the rural areas of St Edmundsbury by 2031

Vision 2031 sets out a view of the future in the borough's rural areas. This includes well-designed and safe new residential areas that fit in well with their surrounding communities and environment and which have enough supporting services, such as roads and water.

By 2031 the vision is for the rural areas to have good connections to Bury St Edmunds or Haverhill, with a range of thriving local services, open spaces, community, leisure and cultural facilities that people can easily reach and use. There will be excellent transport options for pedestrians, cyclists and users of public transport.

## Using the land

One of the major elements of the St Edmundsbury Local Development Framework, of which Rural Vision 2031 is a part, is how land is used in the future. We need to make sure we have enough land allocated to various uses, such as employment (for jobs) and housing. Sites with the biggest potential impact need to be carefully managed to ensure people get suitable local development.

In the rural areas the sites have fewer homes than those in the towns, but they can have an equally big impact and need careful development control to ensure they fit in well with their surroundings. The general principle is that villages which have more facilities will be suitable for more homes.

The map shows the major new housing sites in the rural areas – full details are on the website and in the printed Vision 2031 document. It is important to remember that these new homes will not all be built at once – in many cases building will be phased up to 2031.

## Policies

Rural Vision 2031 also sets out the policies which will apply to development outside the towns. There are policies, for example, covering which land will be available for employment use (to create jobs), green infrastructure (such as open spaces and woodlands), housing settlement boundaries and so on.



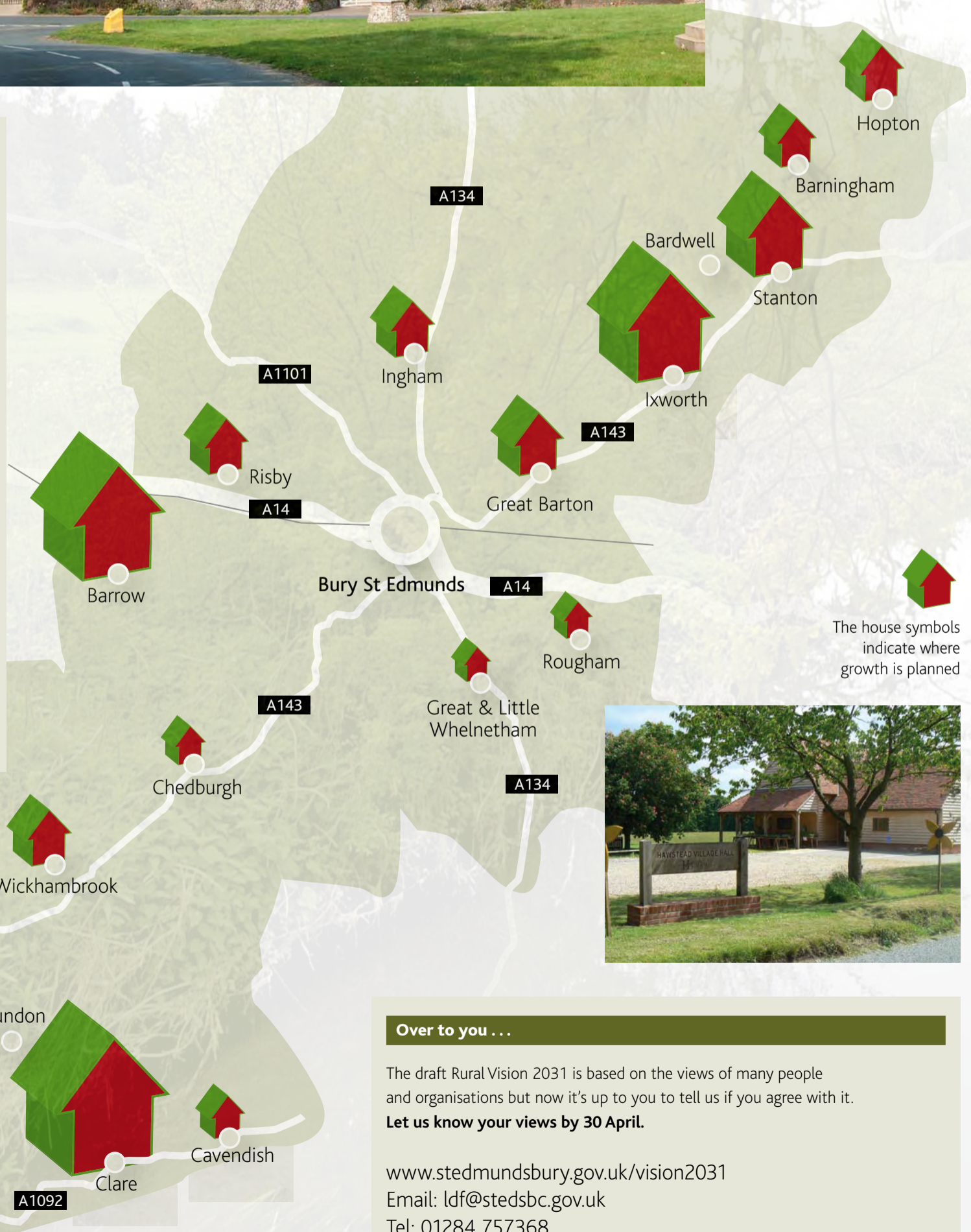
## Working together

While Vision 2031 focuses on public aspirations, St Edmundsbury is drafting our Corporate Plan which sets out more specifically how, over the next four years, we are going to start that 20-year journey. The draft is based on budget and other consultations with residents, businesses and various organisations over the past few months as well as drawing on the extensive consultation carried out for Vision 2031.

It boils all this down to three overarching priorities, each with their own actions. We will work together for:

1. strong, healthy and diverse communities;
2. prosperous and environmentally-healthy communities;
3. an efficient council.

The overriding emphasis of the Corporate Plan is 'working together'. The times when one single organisation can deliver something alone are increasingly rare. As in Vision 2031, the Corporate Plan stresses that St Edmundsbury will need to work with our public sector (such as government and health) partners, businesses, voluntary organisations and borough residents to deliver what our urban and rural communities say they want for their future.



The house symbols indicate where growth is planned



## Over to you ...

The draft Rural Vision 2031 is based on the views of many people and organisations but now it's up to you to tell us if you agree with it.

**Let us know your views by 30 April.**

[www.stedmundsbury.gov.uk/vision2031](http://www.stedmundsbury.gov.uk/vision2031)

Email: [ldf@stedsbc.gov.uk](mailto:ldf@stedsbc.gov.uk)

Tel: 01284 757368